

### Specifications

備注 (Remark)

1. 材料 (Material)

膠芯: PA9T/LCP+30%G.F UL94V-0, 顏色: 黑色

Housing: PA9T/LCP+30%G.F UL94V-0, Color: Black

端子: 黃銅

Contact: Brass

2. 特性 (characteristics):

額定電流: 7.00AMP

Rating Current: 7.00AMP

接觸阻抗: 30mΩ Max

Contact Resistance: 30mΩ Max

絕緣阻抗: 1000MΩ Min

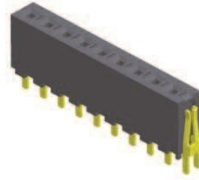
Insulating Resistance: 1000 MΩ Min

耐電壓: AC 1000V/分钟

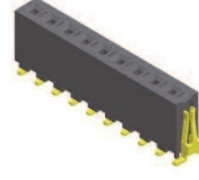
Withstanding Voltage: AC 1000V/Minute

溫度範圍: -40° C to +105° C

Temperature Range: -40° C to +105° C

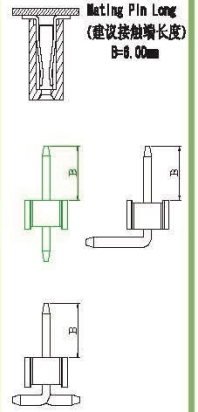


BF396-11PXXXX890X1

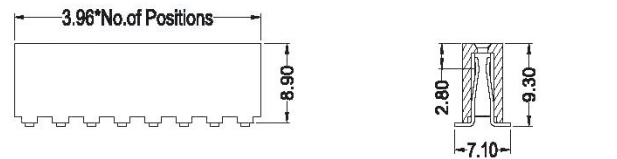
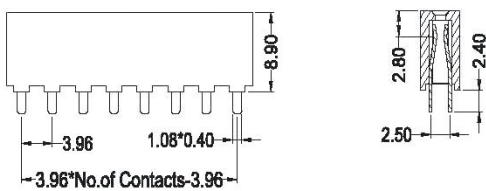
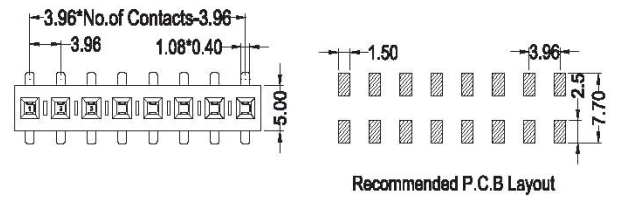
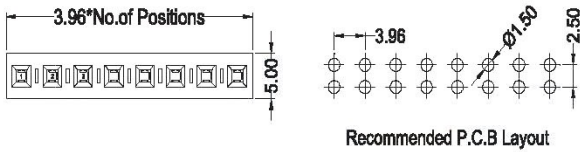


BF396-11SXXXX890X1

Mating With/配對公座:  
P731/P732



FEMALE HEADER



BF396-11

X

XX

XX

890

X

1

**Contact Shape:**  
P: Straight  
S: SMT

**No. Of Pins Per Row**  
02~20P

**Contact Plating**  
Full Of Gold  
G0=0.8u"  
~  
G9=30u"  
S1=Ordinary Tin Plated  
S2=Matte Tin Plated  
S3=Tin-plated High-temperature

**Packing**  
A: PE Bag  
R: Tape & Reel  
T: Tube  
D: Tube+CAP  
E: Tray